

Cooperation opportunities in the agro and agro food sectors

Agriculture in Flanders
Marc Rosiers, 20 October 2011

DE BOERENBOND DAAR HEB JE WAT AANI WWW.BOERENBOND.BE 1

Content

- Some macro-economic data
- Economic situation of farming in Flanders
 - Agricultural production
 - Net value added
 - Breakdown of operating income per sector
 - Prices
 - Yield and output
 - Trade
 - Home consumption
- Structural data
 - The agribusiness complex
 - Employment in agricultural sector
 - Eco-efficiency of agriculture
 - Agricultural surface
 - Number of farms
- Conclusions

DE BOERENBOND DAAR HEB JE WAT AANI WWW.BOERENBOND.BE 2

Romania - Belgium

2010	Romania	Belgium
• Population	22 million (x 2)	11 million
• Surface	238.000 km2 (x 8)	30.500 km2
• Agri surface	13.750.000 ha (x 10)	1.375.000 ha
• GDP	122 billion EUR	353 billion EUR (x 3)
• GDP/Capita	5.500 EUR	32.000 EUR (x 6)
• GDP nom. growth - 2012	3,7%	2,2%
• Export	44 billion EUR	288 billion EUR (x 6)
• Import	50 billion EUR	276 billion EUR (x 5)
• Export agri	3 billion EUR	27 billion EUR (x 9)
• Import agri	4 billion EUR	23 billion EUR (x 6)
• Trade balance	-6 billion EUR	+16 billion EUR
• Active population	9.735.000 (x 2)	4.875.000
• Unemployment rate	6,8%	7,8%

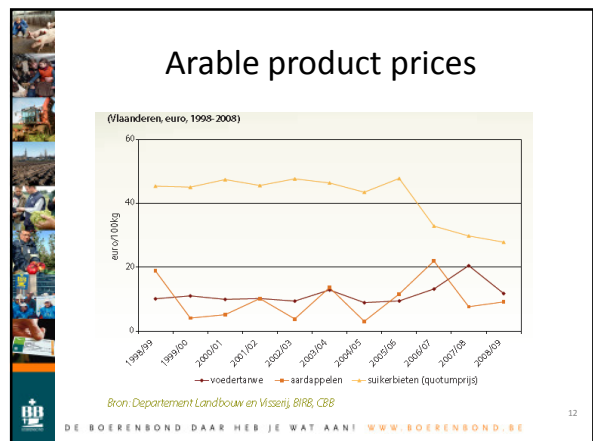
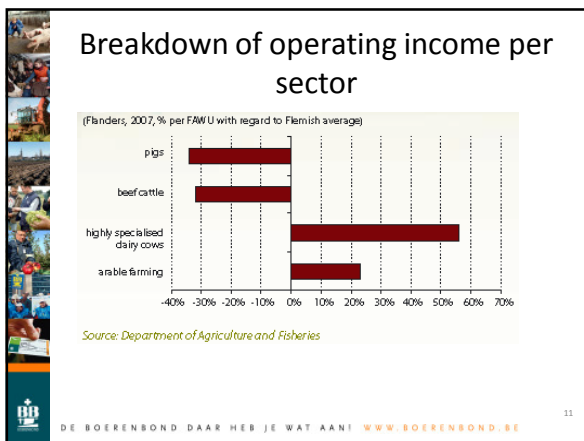
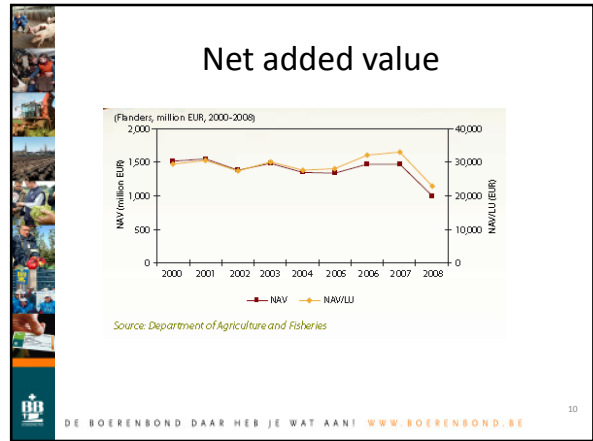
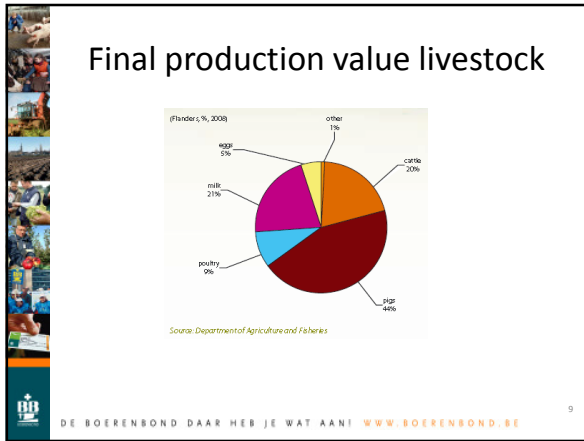
DE BOERENBOND DAAR HEB JE WAT AANI WWW.BOERENBOND.BE 3

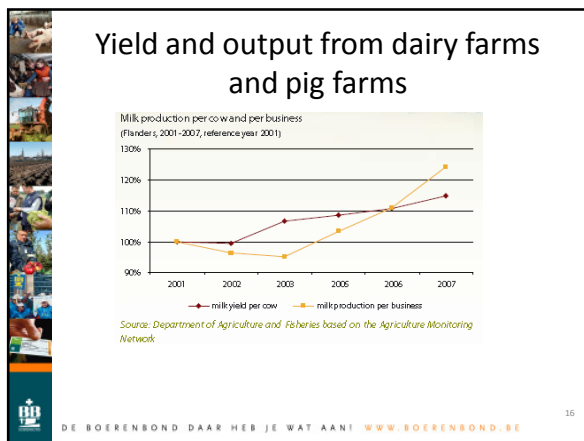
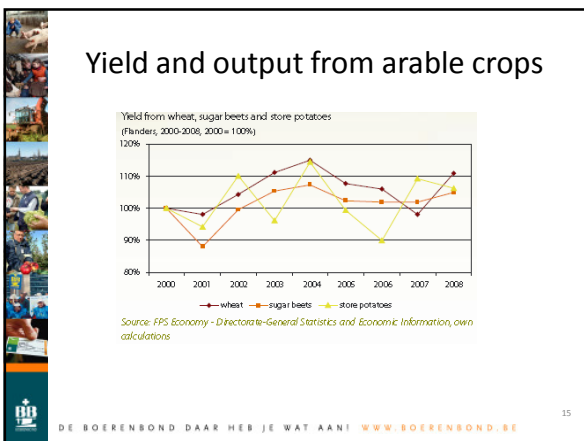
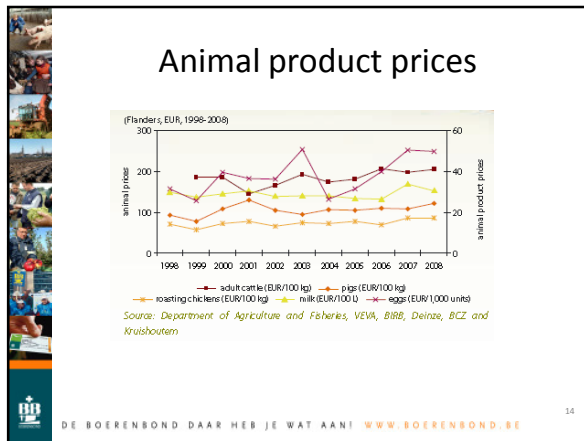
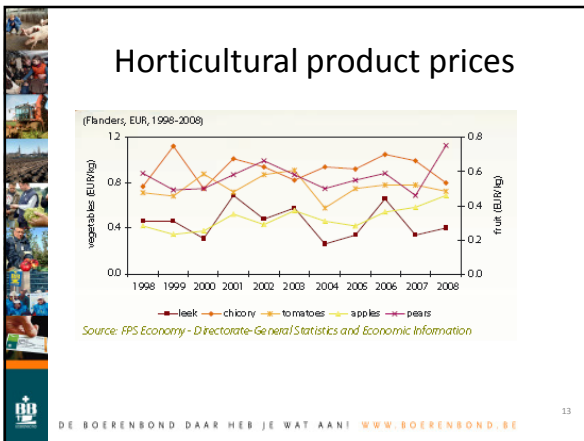
Final production value

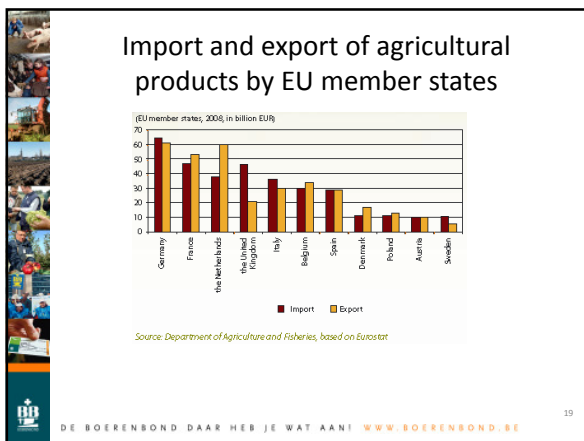
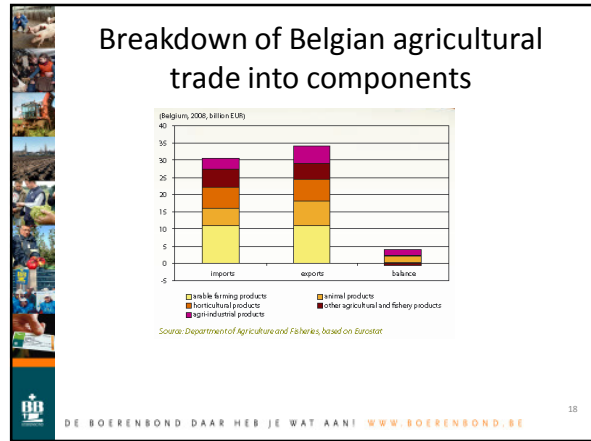
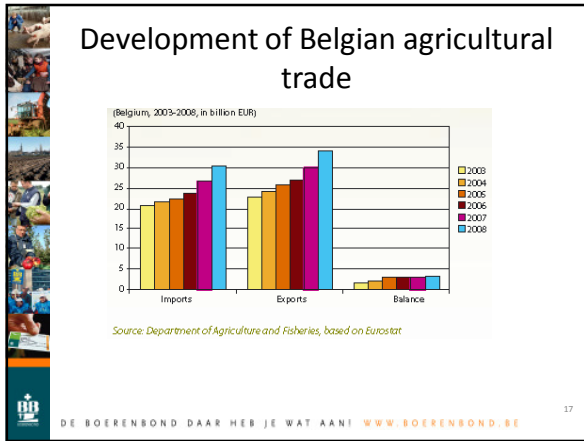
(Flanders, million EUR, 2000-2008)

Source: Department of Agriculture and Fisheries

DE BOERENBOND DAAR HEB JE WAT AANI WWW.BOERENBOND.BE 4







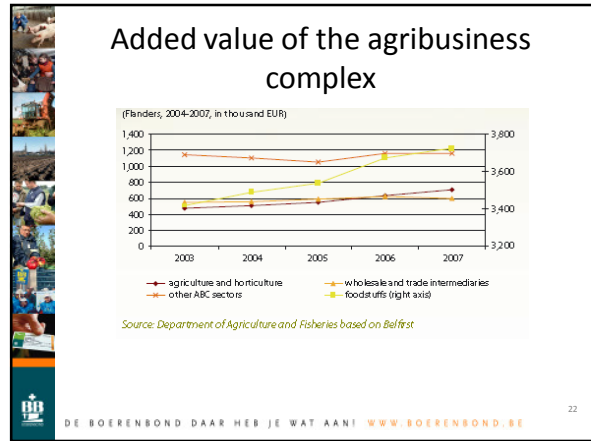
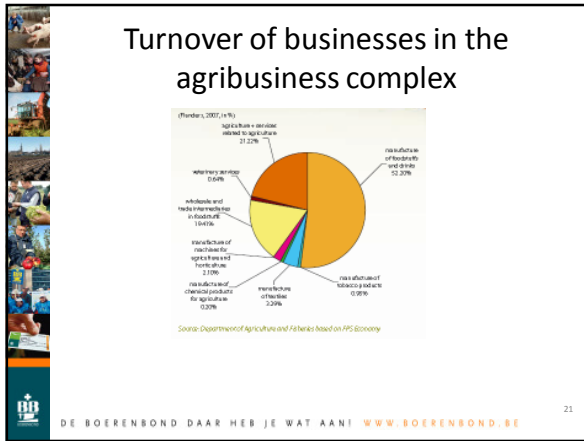
Home consumption of fresh agri-foodstuff products

Home consumption of fresh agri-foodstuff products in Flanders, in kg per capita

	2000	2001	2002	2003	2004	2005	2006	2007	2008
drinking milk*	643	571	593	583	572	545	548	537	515
cheese	98	98	102	99	104	107	106	108	108
pork/bacon	413	413	394	381	375	384	369	380	391
beef	1068	1007	996	925	906	974	919	812	866
lamb	892	848	866	820	867	854	823	856	845
veal	604	597	612	604	616	624	560	575	601
liver	343	300	323	303	303	298	283	296	301
poultry & game	125	121	126	116	119	130	118	128	134
eggs**	892	819	828	796	783	825	887	866	868
fish	74	64	66	76	76	73	61	69	67

* litres ** units

DE BOERENBOND DAAR HEB JE WAT AAN! WWW.BOERENBOND.BE 20



Development of the number of businesses in the agribusiness complex

(Flanders, 2003-2007)

	2003	2004	2005	2006	2007
Flanders	49,061	47,800	46,662	46,420	43,471
agriculture and horticulture	36,577	35,486	34,410	33,272	31,984
and agriculture and horticulture	12,484	12,364	12,253	12,157	11,489
food	5,790	5,681	5,622	5,542	5,196
ABC related wholesale and trade mediation	4,121	4,038	3,942	3,896	3,466
other ABC sectors	2,573	2,482	2,489	2,739	2,825

Source: FPS Economy - Directorate-General Statistics and Economic Information, FPS Finance

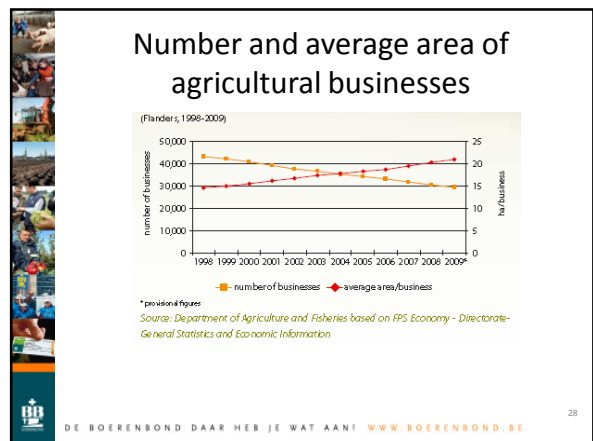
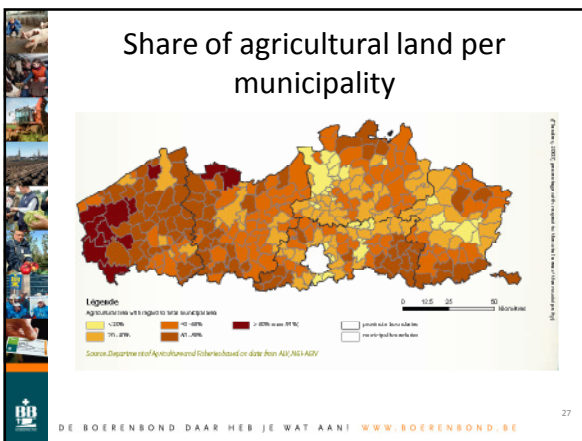
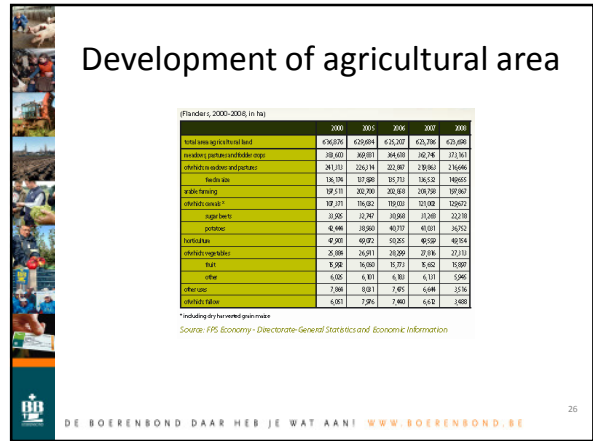
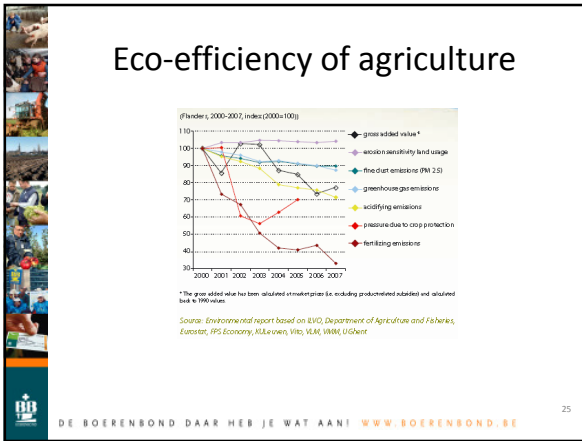
DE BOERENBOND DAAR HEB JE WAT AAN! WWW.BOERENBOND.BE 23

Employment in the agricultural sector

Employment in the agricultural and horticultural sector, 2001-2008

	2001	2005	2006	2007	2008
number of regularly employed people	72,066	66,990	64,983	62,511	60,563
number of agricultural work units	53,107	49,717	48,114	46,783	46,000
number of regularly employed people	100%	100%	100%	100%	100%
family	96%	94%	93%	93%	92%
non-family	14%	16%	17%	17%	18%
number of regularly employed people	100%	100%	100%	100%	100%
male	65%	65%	65%	65%	65%
female	35%	35%	35%	35%	35%

DE BOERENBOND DAAR HEB JE WAT AAN! WWW.BOERENBOND.BE 24



Number and average area of agricultural businesses

Average area of cultivated land (ha) per business according to specialisation, 2008

	average area
arable farming	21.3
horticulture	7.9
grazing animals	23.0
granivores (pigs, poultry, etc.)	12.3
mixed businesses	28.5
all businesses	20.3

DE BOERENBOND DAAR HEB JE WAT AAN! WWW.BOERENBOND.BE 29

Breakdown of agricultural businesses according to business size

Breakdown of businesses according to agricultural area, 2008

	number of businesses	%
0 - 10ha	13,590	44.3%
10 - 20ha	5,593	18.2%
20 - 30ha	3,964	12.9%
30 - 50ha	4,664	15.2%
> 50 ha	2,885	9.3%
total	30,666	100.0%

DE BOERENBOND DAAR HEB JE WAT AAN! WWW.BOERENBOND.BE 30

Breakdown of businesses according to business orientation

Breakdown of businesses per production orientation, Flanders, 2008

businesses (incl. fish)	number of businesses
arable farming	6,985
horticulture	5,313
vegetables	2,294
fruit	1,211
other crop production	899
other horticulture	312
grazing animals	11,059
fish production	1,281
beekeeping	636
other crafts	1,183
other grazing animals	1,947
granivores	2,719
PPP	2,461
poultry	396
mixed business	31
total	6,881
total	30,666

DE BOERENBOND DAAR HEB JE WAT AAN! WWW.BOERENBOND.BE 31

Conclusions

- Flanders is
 - an intensive farm region in an urbanised environment,
 - highly specialised in pork, dairy and poultry, fruit & vegetables and horticulture.
 - The added value is mainly remunerated by the market (subsidies count only for 28% of the value added).
 - An net exporter of agricultural and food products.
 - Continuous pressure on prices force farmers to seek continuously productivity gains.

DE BOERENBOND DAAR HEB JE WAT AAN! WWW.BOERENBOND.BE 32