

PBS Worldwide

Investment in agriculture and food in Romania Practical aspects

ir. Freddy M.E. Jacobs
PBS Worldwide
Seminar 20 October 2010
www.pbsworldwide.com
www.cibr.be
www.investmentrealestateromania.eu

PBS Worldwide

Who are we ?

- PBS Worldwide: an interim management company that assists in the pre project phase, company creation or asset deal, the actual project and the start-up of your exploitation with or without subventions – 9 years experience in romania
- CIBR(Belgian Romanian Real Estate Chamber: lobby, networking, business clubs, seminars, dedicated services to members to develop their business

Copyright © Freddy Jacobs - 2011

We thank our event sponsors

3

Copyright © Freddy Jacobs - 2011

Index


- Part 1: The set-up of the investment & subventions
- Part 2: Set-up details
- Part 3: Cases & Tips

"The set-up of the investment and the screening for funds should be done at the same time ."

CAMERA IMOBILIARA BELGIA ROMANA

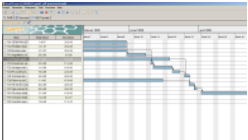
4

Copyright © Freddy Jacobs - 2011




The time frame

1. Pre-application phase and setup: starts 5-6 months before the actual deposit of the application
2. Project starts after that the contract for funding is signed with a duration as specified in the applicable guide



CAMERA IMOBILIARA BELGIA ROMANA 5

Copyright © Freddy Jacobs - 2011




Who is eligible ?

- n Those that already exist !
- n Consider a take-over to accelerate applications ...
- n It is very important to make a planning 12 months upfront in cooperation with a specialist
- n Most investors are TOO LATE
- n There is no such thing as easy and free money.....

PBS Worldwide 6

Copyright © Freddy Jacobs - 2011



Subsidy search & project engineering

- n Everything is in Romanian language because it is too early for translations....
- n Hire a consultant/manager/interim manager with experience in the domain of structural instruments
- n Start asap and make sure that the consultant/manager/interim manager registers the land in the cadaster after that you purchased the land....it is more than just taking a commission on sales. We provide this services on an interim management basis

CAMERA IMOBILIARA BELGIA ROMANA 7

Copyright © Freddy Jacobs - 2011



Agriculture 8 billion euro subventions


FEADR comprises four axes containing several measures; some of them continue those in SAPARD programme:

1. The first axis is concerned with the increase of the agricultural and forests competitiveness.
2. The second axis - the improvement of the environment and the rural areas
3. The third axis - the life quality in the rural areas and diversification of the rural economy
4. The fourth is the Leader axis.

"Grants start from 50% non refundable on project value via structural instruments"

PBS Worldwide 8

Copyright © Freddy Jacobs - 2011



Agri measure 121 – 2.000.000 Euro

*„Modernizarea exploataților agricole” se încadrează în Axa I
„Creșterea competitivității sectorului agricol și silvic” și are ca obiective:*

- Introducerea și dezvoltarea de tehnologii și procedee noi, diversificarea producției, ajustarea profilului, nivelului și calității producției la cerințele pieței, inclusiv a celei ecologice, precum și producerea și utilizarea energiei din surse regenerabile;
- Adaptarea exploatațiilor la standardele comunitare;
- Creșterea veniturilor exploatațiilor agricole sprijinite;
- Sprijinirea membrilor grupurilor de producători sau ai altor forme asociative în vederea încurajării fenomenului de asociere.

Allocated Funds from FEADR are 991.827.895 Euro (0,99 billion Euro) : contribution Romanian Government – 20% și contribution EU – 80% and 40% -75% refunding on 2 million Euro.

9

Copyright © Freddy Jacobs - 2011



Agri Measure 123 – (2 mio ->3 mio Euro)

„Creșterea valorii adăugate a produselor agricole și forestiere” se încadrează în Axa I – „Creșterea competitivității sectorului agricol și silvic” și are ca obiective principale:


- § Introducerea și dezvoltarea de tehnologii și procedee pentru obținerea de noi produse agricole și forestiere competitive;
- § Adaptarea întreprinderilor la noile standarde comunitare atât în etapa de procesare cât și în cea de distribuție a produselor obținute;
- § Îmbunătățirea veniturilor întreprinderilor sprijinite prin creșterea valorii adăugate a produselor agricole;
- § Creșterea valorii adăugate a produselor forestiere precum și a eficienței economice a activității microîntreprinderilor, prin dezvoltarea și modernizarea echipamentelor, proceselor și tehnologiilor de prelucrare.

Allocated Funds from FEADR are **1.071.174.126 euro** (1,07 billion Euro) : contribution Romanian Government – 20% și contribution EU – 80% and 50% refunding on 3 million.

PBS Worldwide

10

Copyright © Freddy Jacobs - 2011



Practical Agri


- Look for a set-up specialist/expert/....
- Create a Romanian Company asap with the expert
- Buy a land = property search with....
- Have the correct eligible codes of activity
- Carry this activity for one fiscal year
- End that year with a P/L that shows profit
- File whenever there is a call
- Or accelerate and do a take-over of an eligible company – or make it eligible by generating profit – the rest is restricted

“Average Duration: 6-14 months !”

CAMERA IMOBILIARA BELGIA ROMANA

11

Copyright © Freddy Jacobs - 2011




The guides for subventions


Măsura 112 Tineri fermieri	Măsura 221 Prima împădurire
Măsura 121 Exploatații agricole	Măsura 312 Microîntreprinderi
Măsura 123 Produse agricole și forestiere	Măsura 313 Activități turistice
Măsura 125 Dezvoltarea infrastructurii	Măsura 322 - submăsura d) Renovarea și dezvoltarea saletelor

12

Copyright © Freddy Jacobs - 2011




Purchase of land - compactness



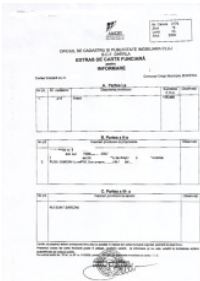
This land is ok: 4 hectares
in one piece
The same rules
for 400 hectare

PBS Worldwide 17

Copyright © Freddy Jacobs - 2011



The paperwork of the land




This land is ok: 11 hectares
in one piece with carte funciara
The land is registered in the
cadaster (kadaster)

18

Copyright © Freddy Jacobs - 2011


The paperwork of the land




This land is not ok: 8.15
hectares with property title
in one piece without carte
funciara
The land is NOT registered in
the cadaster ...

19

Copyright © Freddy Jacobs - 2011

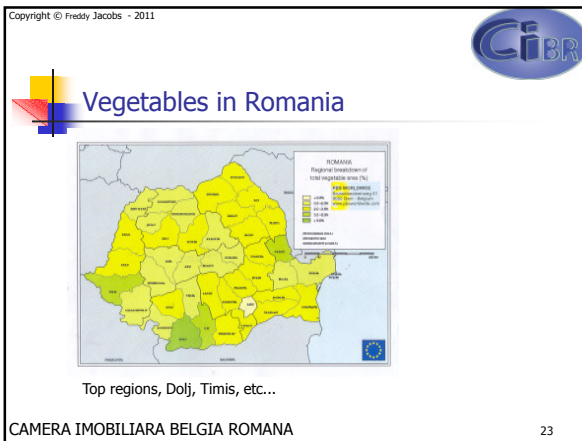
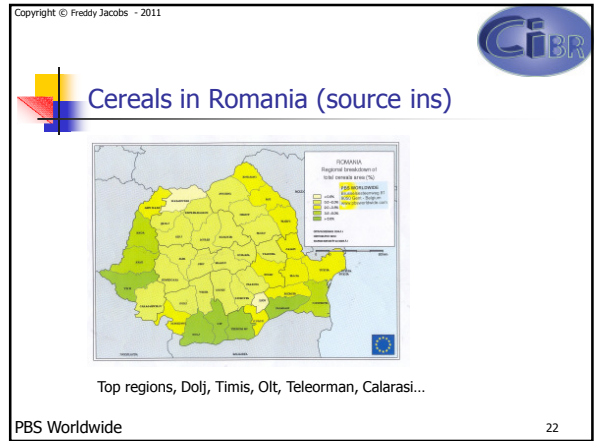
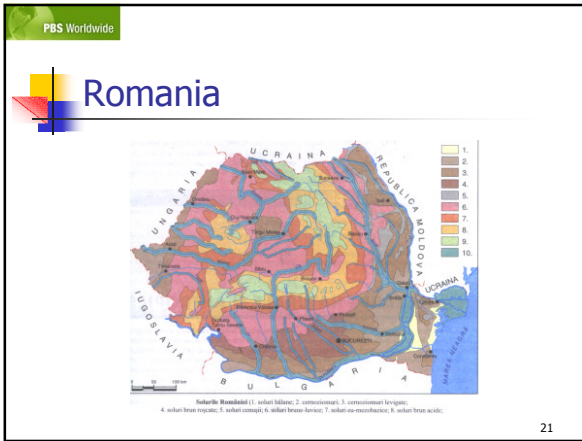


Your benefit or loss ?



CAMERA IMOBILIARA BELGIA ROMANA

20



PBS Worldwide

AGENTIA DE PLĂȚI ȘI INTERVENȚIE PENTRU AGRICULTURĂ

1 March – 16 May 2011 - demand

86 euro/ha, precum: cereale, culturi proteice, plante industriale, rădăcinoase, legume proaspete, pepeni, flori și plante ornamentale, plante de nutreț, loturi semincere, pajști temporare, alte culturi pe teren arabil.

De asemenea, pentru pasuni, fanete, in afara de SAPS se mai acorda sume suplimentare pentru:

- Plati pentru zone defavorizate – au rolul de a compensa productivitatea agricola mai redusa a terenurilor agricole din cele 3 tipuri de zone defavorizate, insa solicitantul trebuie sa se angajeze ca va continua activitatile agricole pe o perioada de 5 ani de la prima plata.
- Zona Montana Defavorizata – plata de 50 Euro/ha/an
- Zona Defavorizata de conditii Naturale Specifice – plata de 60 Euro/ha/an
- Zona Semnificativ Defavorizata – plata de 90 Euro/ha/an

24



SAPA

In 2014 Romania needs to pay as much as the other European countries (about 3 times the current amount)

25

PBS Worldwide



More information

**Offices Gent and Buzau
CIBR and PBS Worldwide
Ir. Freddy M.E. Jacobs
www.pbsworldwide
Managing director , PBS mail frjacobs@pandora.be
+32.478.331.799
President CIBR mail Cibr@telenet.be
+40.766.622.873
www.cibr.be**

26